



PIP STUDIO

• AMSTERDAM •

HOMEWEAR COLLECTION FALL WINTER 2022





THE HARE AND THE NIGHTINGALE

Do you remember Yuki and Emi, my Japanese friends? They asked Olle and me to join them on their great hike through the woods. Officially, their goal is to find mushrooms for the restaurant. Unofficially, they use it as an excuse to get away from it all and catch up. They spend the night in their log cabin that makes you feel like you have been transported to the Japanese Alps and has a name straight out of a fairy tale: The Hare and the Nightingale.

The cabin is made entirely out of wood, there is a Japanese lamp in every room and on the ground floor there is even a genuine spiral staircase. Olle and I arrived there on a Friday. It was a gorgeous autumn day, so we decided to explore the area on our own. Olle said he knew where to go: the best mushrooms grow near ancient trees. He moved some fallen leaves around here and there with his hiking shoe and to his credit we did find some mushrooms, but not a whole lot. As time went by, we ventured deeper into the woods and strayed farther and farther from the path. You can probably guess where this is going: by the time we had gathered enough mushrooms to surprise Yuki and Emi, neither one of us had the faintest idea of where we were. We were truly lost in the woods. I took out my phone but of course the battery had died at the worst possible time. Olle began to laugh. We had to go about this in a completely different way. "The forest will show us the way," Olle said. He extended his arm to me. "We have to look for the clues that nature is giving us. What can we hear? What can we see? Along the way, let's also gather some wood for the fireplace."

I love Olle and his boundless optimism, but I must admit I was not feeling very confident. I heard the soft rustling of the wind and the creaking of the branches overhead. I could not hear anything that told me how to get back to the cabin, though. I noticed that the light had begun to fade from the sky. Then we saw a small hare with ears perked up between the trees in front of us. Was it staring directly at us? We felt we had no choice but to follow it. It kept running a short

distance ahead before stopping to give us time to catch up. It was getting darker and colder and just as a light drizzle began to fall, we found ourselves on a wider path and saw the cabin in the distance. A deer gave us a curious look from between the trees. Olle and I were struck dumb. Just as we felt things couldn't get more incredible, we heard the song of a nightingale. We approached the cabin through the gorgeously landscaped garden. Emi was waiting for us at the door. It was like she had known exactly when we would arrive. She was wearing a housecoat whose colours matched those of the forest around her. We could see candles burning inside. "Come in quickly," she said, "we were just about to have some tea."

Yuki was sitting in the conversation pit. She was wearing a kimono that, just like her quilt, was made from Emi's old collection of ribbons: "We're going to play a game!"

Olle sat down next to her on a sheepskin. I found a spot on the carpet near the fireplace, glanced at the small stuffed fox near me and suddenly felt overcome with inspiration for the new autumn collection.

I hope you have an amazing winter.

Hugs and kisses from Pip









| | |
|----|---|
| 32 | MIX & MATCH |
| 46 | TROUSERS |
| 50 | JUMPSUITS & EYE MASKS |
| 51 | DRESSES |
| 54 | LONG SLEEVES |
| 55 | SHORT SLEEVES |
| 58 | KIMONOS |
| 60 | HOME SPORTSWEAR |
| 62 | PROMO ITEMS |
| 63 | SUSTAINABILITY & WASHCARE INSTRUCTIONS |
| 64 | COLOPHON |

























































MIX & MATCH





MIX & MATCH





MIX & MATCH





MIX & MATCH





MIX & MATCH










BOBIEN

Long Trousers Suki Dark Pink
95% Viscose - 5% Elasthane

51.500.699 - XS 51.500.702 - L
51.500.700 - S 51.500.703 - XL
51.500.701 - M 51.500.704 - XXL


BOBIEN

Long Trousers Suki Dark Blue
95% Viscose - 5% Elasthane

51.500.693 - XS 51.500.696 - L
51.500.694 - S 51.500.697 - XL
51.500.695 - M 51.500.698 - XXL


BOBIEN

Long Trousers Suki Dark Green
95% Viscose - 5% Elasthane

51.500.687 - XS 51.500.690 - L
51.500.688 - S 51.500.691 - XL
51.500.689 - M 51.500.692 - XXL


BOBIEN

Long Trousers Kawai Flower Pink
95% Viscose - 5% Elasthane

51.500.681 - XS 51.500.684 - L
51.500.682 - S 51.500.685 - XL
51.500.683 - M 51.500.686 - XXL


BOBIEN

Long Trousers Kawai Flower Dark Blue
95% Viscose - 5% Elasthane

51.500.675 - XS 51.500.678 - L
51.500.676 - S 51.500.679 - XL
51.500.677 - M 51.500.680 - XXL


BOBIEN

Long Trousers Kawai Flower Dark Green
95% Viscose - 5% Elasthane

51.500.669 - XS 51.500.672 - L
51.500.670 - S 51.500.673 - XL
51.500.671 - M 51.500.674 - XXL



BOBIENTJE

Long Trousers Tokyo Bouquet Terra
95% Viscose - 5% Elasthane

| | |
|-----------------|------------------|
| 51.500.663 - XS | 51.500.666 - L |
| 51.500.664 - S | 51.500.667 - XL |
| 51.500.665 - M | 51.500.668 - XXL |



BOBIENTJE

Long Trousers Tokyo Bouquet Dark Green
95% Viscose - 5% Elasthane

| | |
|-----------------|------------------|
| 51.500.657 - XS | 51.500.660 - L |
| 51.500.658 - S | 51.500.661 - XL |
| 51.500.659 - M | 51.500.662 - XXL |



BOBIEN

Long Trousers Solid Brown/Red
95% Viscose - 5% Elasthane

| | |
|-----------------|------------------|
| 51.500.735 - XS | 51.500.738 - L |
| 51.500.736 - S | 51.500.739 - XL |
| 51.500.737 - M | 51.500.740 - XXL |



BOBIEN

Long Trousers Solid Blue
95% Viscose - 5% Elasthane

| | |
|-----------------|------------------|
| 51.500.747 - XS | 51.500.750 - L |
| 51.500.748 - S | 51.500.751 - XL |
| 51.500.749 - M | 51.500.752 - XXL |



BOBIEN

Long Trousers Solid Green
95% Viscose - 5% Elasthane

| | |
|-----------------|------------------|
| 51.500.741 - XS | 51.500.744 - L |
| 51.500.742 - S | 51.500.745 - XL |
| 51.500.743 - M | 51.500.746 - XXL |


BELIN

Long Trousers Ribbon Red/Pink
100% Woven Shiny Viscose

| | |
|-----------------|------------------|
| 51.500.705 - XS | 51.500.708 - L |
| 51.500.706 - S | 51.500.709 - XL |
| 51.500.707 - M | 51.500.710 - XXL |


BELIN

Long Trousers Ribbon Green/Blue
100% Woven Shiny Viscose

| | |
|-----------------|------------------|
| 51.500.711 - XS | 51.500.714 - L |
| 51.500.712 - S | 51.500.715 - XL |
| 51.500.713 - M | 51.500.716 - XXL |


BELIN

Long Trousers Sumo Stripe Brown/Red
95% Viscose - 5% Elasthane

| | |
|-----------------|------------------|
| 51.500.729 - XS | 51.500.732 - L |
| 51.500.730 - S | 51.500.733 - XL |
| 51.500.731 - M | 51.500.734 - XXL |


BELIN

Long Trousers Sumo Stripe Dark Blue
95% Viscose - 5% Elasthane

| | |
|-----------------|------------------|
| 51.500.723 - XS | 51.500.726 - L |
| 51.500.724 - S | 51.500.727 - XL |
| 51.500.725 - M | 51.500.728 - XXL |


BELIN

Long Trousers Sumo Stripe Dark Green
95% Viscose - 5% Elasthane

| | |
|-----------------|------------------|
| 51.500.717 - XS | 51.500.720 - L |
| 51.500.718 - S | 51.500.721 - XL |
| 51.500.719 - M | 51.500.722 - XXL |



BOB

Short Trousers Kawai Flower Dark Pink
95% Viscose - 5% Elasthane

| | |
|-----------------|------------------|
| 51.501.337 - XS | 51.501.340 - L |
| 51.501.338 - S | 51.501.341 - XL |
| 51.501.339 - M | 51.501.342 - XXL |



BOB

Short Trousers Kawai Flower Dark Blue
95% Viscose - 5% Elasthane

| | |
|-----------------|------------------|
| 51.501.331 - XS | 51.501.334 - L |
| 51.501.332 - S | 51.501.335 - XL |
| 51.501.333 - M | 51.501.336 - XXL |



BOB

Short Trousers Kawai Flower Dark Green
95% Viscose - 5% Elasthane

| | |
|-----------------|------------------|
| 51.501.325 - XS | 51.501.328 - L |
| 51.501.326 - S | 51.501.329 - XL |
| 51.501.327 - M | 51.501.330 - XXL |



BODHI

3/4 Trousers Leafy Dots Brown
95% Viscose - 5% Elasthane

| | |
|-----------------|------------------|
| 51.502.043 - XS | 51.502.046 - L |
| 51.502.044 - S | 51.502.047 - XL |
| 51.502.045 - M | 51.502.048 - XXL |



BODHI

3/4 Trousers Leafy Dots Blue
95% Viscose - 5% Elasthane

| | |
|-----------------|------------------|
| 51.502.037 - XS | 51.502.040 - L |
| 51.502.038 - S | 51.502.041 - XL |
| 51.502.039 - M | 51.502.042 - XXL |

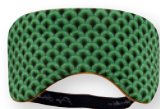


BODHI

3/4 Trousers Leafy Dots Green
95% Viscose - 5% Elasthane

| | |
|-----------------|------------------|
| 51.502.049 - XS | 51.502.052 - L |
| 51.502.050 - S | 51.502.053 - XL |
| 51.502.051 - M | 51.502.054 - XXL |

EYE MASKS



ALIE

Eye Mask Suki Dark Green
95% Viscose - 5% Elasthane
51.530.004 - One Size



ALIE

Eye Mask Suki Dark Blue
95% Viscose - 5% Elasthane
51.530.005 - One Size



ALIE

Eye Mask Suki Dark Pink
95% Viscose - 5% Elasthane
51.530.006 - One Size

JUMPSUITS



PERRE

Jumpsuit Kyoto Festival Terra
95% Viscose - 5% Elasthane

| | |
|-----------------|------------------|
| 51.520.037 - XS | 51.520.040 - L |
| 51.520.038 - S | 51.520.041 - XL |
| 51.520.039 - M | 51.520.042 - XXL |



PERRE

Jumpsuit Kyoto Festival Dark Blue
95% Viscose - 5% Elasthane

| | |
|-----------------|------------------|
| 51.520.043 - XS | 51.520.046 - L |
| 51.520.044 - S | 51.520.047 - XL |
| 51.520.045 - M | 51.520.048 - XXL |



DONATELLA

Long Sleeve Good Nightingale Sand
100% Woven Shiny Viscose

51.503.359 - XS 51.503.362 - L
51.503.360 - S 51.503.363 - XL
51.503.361 - M 51.503.364 - XXL



DONATELLA

Long Sleeve Good Nightingale Green
100% Woven Shiny Viscose

51.503.365 - XS 51.503.368 - L
51.503.366 - S 51.503.369 - XL
51.503.367 - M 51.503.370 - XXL



DAZZLE

Sleeveless Nightdress
Good Nightingale Sand
100% Woven Shiny Viscose

51.506.067 - XS 51.506.070 - L
51.506.068 - S 51.506.071 - XL
51.506.069 - M 51.506.072 - XXL



DAZZLE

Sleeveless Nightdress
Good Nightingale Green
100% Woven Shiny Viscose

51.506.073 - XS 51.506.076 - L
51.506.074 - S 51.506.077 - XL
51.506.075 - M 51.506.078 - XXL



DIOGO

Long Sleeve Nightdress
Good Nightingale Sand
95% Viscose - 5% Elasthane

51.503.347 - XS 51.503.350 - L
51.503.348 - S 51.503.351 - XL
51.503.349 - M 51.503.352 - XXL



DIOGO

Long Sleeve Nightdress
Good Nightingale Green
95% Viscose - 5% Elasthane

51.503.353 - XS 51.503.356 - L
51.503.354 - S 51.503.357 - XL
51.503.355 - M 51.503.358 - XXL



DAALTJE

Long Sleeve Nightdress Leafy Dots Brown

95% Viscose - 5% Elasthane

| | |
|-----------------|------------------|
| 51.503.323 - XS | 51.503.326 - L |
| 51.503.324 - S | 51.503.327 - XL |
| 51.503.325 - M | 51.503.328 - XXL |



DAALTJE

Long Sleeve Nightdress Leafy Dots Blue

95% Viscose - 5% Elasthane

| | |
|-----------------|------------------|
| 51.503.329 - XS | 51.503.332 - L |
| 51.503.330 - S | 51.503.333 - XL |
| 51.503.331 - M | 51.503.334 - XXL |



DESTINY

Long Sleeve Nightdress Suki Dark Pink

95% Viscose - 5% Elasthane

| | |
|-----------------|------------------|
| 51.503.305 - XS | 51.503.308 - L |
| 51.503.306 - S | 51.503.309 - XL |
| 51.503.307 - M | 51.503.310 - XXL |



DESTINY

Long Sleeve Nightdress Suki Dark Blue

95% Viscose - 5% Elasthane

| | |
|-----------------|------------------|
| 51.503.311 - XS | 51.503.314 - L |
| 51.503.312 - S | 51.503.315 - XL |
| 51.503.313 - M | 51.503.316 - XXL |



DESTINY

Long Sleeve Nightdress Suki Dark Green

95% Viscose - 5% Elasthane

| | |
|-----------------|------------------|
| 51.503.317 - XS | 51.503.320 - L |
| 51.503.318 - S | 51.503.321 - XL |
| 51.503.319 - M | 51.503.322 - XXL |



DANA

Long Sleeve Nightdress Kawai Flower Pink
95% Viscose - 5% Elasthane

| | |
|-----------------|------------------|
| 51.503.275 - XS | 51.503.278 - L |
| 51.503.276 - S | 51.503.279 - XL |
| 51.503.277 - M | 51.503.280 - XXL |



DANA

Long Sleeve Nightdress Kawai Flower Dark Blue
95% Viscose - 5% Elasthane

| | |
|-----------------|------------------|
| 51.503.281 - XS | 51.503.284 - L |
| 51.503.282 - S | 51.503.285 - XL |
| 51.503.283 - M | 51.503.286 - XXL |



DANA

Long Sleeve Nightdress Kawai Flower Green
95% Viscose - 5% Elasthane

| | |
|-----------------|------------------|
| 51.503.299 - XS | 51.503.302 - L |
| 51.503.300 - S | 51.503.303 - XL |
| 51.503.301 - M | 51.503.304 - XXL |



DANAI

Long Sleeve Nightdress
Tokyo Bouquet Terra
95% Viscose - 5% Elasthane

| | |
|-----------------|------------------|
| 51.503.287 - XS | 51.503.290 - L |
| 51.503.288 - S | 51.503.291 - XL |
| 51.503.289 - M | 51.503.292 - XXL |



DANAI

Long Sleeve Nightdress
Tokyo Bouquet Dark Green
95% Viscose - 5% Elasthane

| | |
|-----------------|------------------|
| 51.503.293 - XS | 51.503.296 - L |
| 51.503.294 - S | 51.503.297 - XL |
| 51.503.295 - M | 51.503.298 - XXL |



DANIQUE

Long Sleeve Nightdress
Kyoto Festival Tonal Big Terra
95% Viscose - 5% Elasthane

| | |
|-----------------|------------------|
| 51.503.335 - XS | 51.503.338 - L |
| 51.503.336 - S | 51.503.339 - XL |
| 51.503.337 - M | 51.503.340 - XXL |



DANIQUE

Long Sleeve Nightdress
Kyoto Festival Tonal Big Dark Blue
95% Viscose - 5% Elasthane

| | |
|-----------------|------------------|
| 51.503.341 - XS | 51.503.344 - L |
| 51.503.342 - S | 51.503.345 - XL |
| 51.503.343 - M | 51.503.346 - XXL |


TORI

Long Sleeve Little Sumo Stripe Brown/Red
48% Viscose - 48% Polyester - 4% Elasthane

51.511.399 - XS 51.511.402 - L
51.511.400 - S 51.511.403 - XL
51.511.401 - M 51.511.404 - XXL


TORI

Long Sleeve Little Sumo Stripe Dark Blue
48% Viscose - 48% Polyester - 4% Elasthane

51.511.405 - XS 51.511.408 - L
51.511.406 - S 51.511.409 - XL
51.511.407 - M 51.511.410 - XXL


TORI

Long Sleeve Little Sumo Stripe Dark Green
48% Viscose - 48% Polyester - 4% Elasthane

51.511.393 - XS 51.511.396 - L
51.511.394 - S 51.511.397 - XL
51.511.395 - M 51.511.398 - XXL


TRICE

Long Sleeve Suki Dark Pink
95% Viscose - 5% Elasthane

51.511.417 - XS 51.511.420 - L
51.511.418 - S 51.511.421 - XL
51.511.419 - M 51.511.422 - XXL


TRICE

Long Sleeve Suki Dark Blue
95% Viscose - 5% Elasthane

51.511.423 - XS 51.511.426 - L
51.511.424 - S 51.511.427 - XL
51.511.425 - M 51.511.428 - XXL


TRICE

Long Sleeve Suki Dark Green
95% Viscose - 5% Elasthane

51.511.411 - XS 51.511.414 - L
51.511.412 - S 51.511.415 - XL
51.511.413 - M 51.511.416 - XXL


TRICE

Long Sleeve Kawai Flower Dark Pink
95% Viscose - 5% Elasthane

51.511.435 - XS 51.511.438 - L
51.511.436 - S 51.511.439 - XL
51.511.437 - M 51.511.440 - XXL


TRICE

Long Sleeve Kawai Flower Dark Blue
95% Viscose - 5% Elasthane

51.511.441 - XS 51.511.444 - L
51.511.442 - S 51.511.445 - XL
51.511.443 - M 51.511.446 - XXL


TRICE

Long Sleeve Kawai Flower Dark Green
95% Viscose - 5% Elasthane

51.511.429 - XS 51.511.432 - L
51.511.430 - S 51.511.433 - XL
51.511.431 - M 51.511.434 - XXL



TILLY

Short Sleeve Solid Brown/Red
95% Viscose - 5% Elasthane

51.512.313 - XS 51.512.316 - L
51.512.314 - S 51.512.317 - XL
51.512.315 - M 51.512.318 - XXL



TILLY

Short Sleeve Solid Blue
95% Viscose - 5% Elasthane

51.512.325 - XS 51.512.328 - L
51.512.326 - S 51.512.329 - XL
51.512.327 - M 51.512.330 - XXL



TILLY

Short Sleeve Solid Green
95% Viscose - 5% Elasthane

51.512.319 - XS 51.512.322 - L
51.512.320 - S 51.512.323 - XL
51.512.321 - M 51.512.324 - XXL



TRICY

Long Sleeve Leafy Dots Brown
95% Viscose - 5% Elasthane

51.511.453 - XS 51.511.456 - L
51.511.454 - S 51.511.457 - XL
51.511.455 - M 51.511.458 - XXL



TRICY

Long Sleeve Leafy Dots Blue
95% Viscose - 5% Elasthane

51.511.459 - XS 51.511.462 - L
51.511.460 - S 51.511.463 - XL
51.511.461 - M 51.511.464 - XXL



TRICY

Long Sleeve Leafy Dots Green
95% Viscose - 5% Elasthane

51.511.447 - XS 51.511.450 - L
51.511.448 - S 51.511.451 - XL
51.511.449 - M 51.511.452 - XXL



TOM

Long Sleeve Solid Pink
95% Viscose - 5% Elasthane

51.511.489 - XS 51.511.492 - L
51.511.490 - S 51.511.493 - XL
51.511.491 - M 51.511.494 - XXL



TOM

Long Sleeve Solid Brown/Red
95% Viscose - 5% Elasthane

51.511.495 - XS 51.511.498 - L
51.511.496 - S 51.511.499 - XL
51.511.497 - M 51.511.500 - XXL



TOM

Long Sleeve Solid Green
95% Viscose - 5% Elasthane

51.511.501 - XS 51.511.504 - L
51.511.502 - S 51.511.505 - XL
51.511.503 - M 51.511.506 - XXL



TOM

Long Sleeve Solid Blue
95% Viscose - 5% Elasthane

51.511.507 - XS 51.511.510 - L
51.511.508 - S 51.511.511 - XL
51.511.509 - M 51.511.512 - XXL



TOM

Long Sleeve Kyoto Festival Terra
95% Viscose - 5% Elasthane

| | |
|-----------------|------------------|
| 51.511.465 - XS | 51.511.468 - L |
| 51.511.466 - S | 51.511.469 - XL |
| 51.511.467 - M | 51.511.470 - XXL |



TOM

Long Sleeve Kyoto Festival Dark Blue
95% Viscose - 5% Elasthane

| | |
|-----------------|------------------|
| 51.511.471 - XS | 51.511.474 - L |
| 51.511.472 - S | 51.511.475 - XL |
| 51.511.473 - M | 51.511.476 - XXL |



FLOS

Long Sleeve Tokyo Bouquet Terra
95% Viscose - 5% Elasthane

| | |
|-----------------|------------------|
| 51.511.483 - XS | 51.511.486 - L |
| 51.511.484 - S | 51.511.487 - XL |
| 51.511.485 - M | 51.511.488 - XXL |



FLOS

Long Sleeve Tokyo Bouquet Dark Green
95% Viscose - 5% Elasthane

| | |
|-----------------|------------------|
| 51.511.477 - XS | 51.511.480 - L |
| 51.511.478 - S | 51.511.481 - XL |
| 51.511.479 - M | 51.511.482 - XXL |



REVERSIBLE



NICA

Cardigan Quilted Kyoto Festival Tonal Terra
100% Cotton Woven

| | |
|-----------------|------------------|
| 51.509.049 - XS | 51.509.052 - L |
| 51.509.050 - S | 51.509.053 - XL |
| 51.509.051 - M | 51.509.054 - XXL |



REVERSIBLE



NICA

Cardigan Quilted Kyoto Festival Tonal Dark Blue
100% Cotton Woven

| | |
|-----------------|------------------|
| 51.509.043 - XS | 51.509.046 - L |
| 51.509.044 - S | 51.509.047 - XL |
| 51.509.045 - M | 51.509.048 - XXL |



NAOMI

Kimono Solid Nicky Velvet Terra
80% Cotton - 20% Polyester

| | |
|-----------------|------------------|
| 51.510.422 - XS | 51.510.425 - L |
| 51.510.423 - S | 51.510.426 - XL |
| 51.510.424 - M | 51.510.427 - XXL |



NAOMI

Kimono Solid Nicky Velvet Green
80% Cotton - 20% Polyester

| | |
|-----------------|------------------|
| 51.510.416 - XS | 51.510.419 - L |
| 51.510.417 - S | 51.510.420 - XL |
| 51.510.418 - M | 51.510.421 - XXL |



NAOMI

Kimono Tokyo Bouquet Terra
95% Viscose - 5% Elasthane

| | |
|-----------------|------------------|
| 51.510.368 - XS | 51.510.371 - L |
| 51.510.369 - S | 51.510.372 - XL |
| 51.510.370 - M | 51.510.373 - XXL |



NAOMI

Kimono Tokyo Bouquet Dark Green
95% Viscose - 5% Elasthane

| | |
|-----------------|------------------|
| 51.510.374 - XS | 51.510.377 - L |
| 51.510.375 - S | 51.510.378 - XL |
| 51.510.376 - M | 51.510.379 - XXL |



NAOMI

Kimono Colour Block Dark Blue
95% Viscose - 5% Elasthane

| | |
|-----------------|------------------|
| 51.510.362 - XS | 51.510.365 - L |
| 51.510.363 - S | 51.510.366 - XL |
| 51.510.364 - M | 51.510.367 - XXL |



NOELLE

Kimono Ribbon Red/Pink
100% Woven Shiny Viscose

| | |
|-----------------|------------------|
| 51.510.404 - XS | 51.510.407 - L |
| 51.510.405 - S | 51.510.408 - XL |
| 51.510.406 - M | 51.510.409 - XXL |



NOELLE

Kimono Ribbon Green/Blue
100% Woven Shiny Viscose

| | |
|-----------------|------------------|
| 51.510.410 - XS | 51.510.413 - L |
| 51.510.411 - S | 51.510.414 - XL |
| 51.510.412 - M | 51.510.415 - XXL |



NISHA

Kimono Kawai Flower Pink
95% Viscose - 5% Elasthane

| | |
|-----------------|------------------|
| 51.510.380 - XS | 51.510.383 - L |
| 51.510.381 - S | 51.510.384 - XL |
| 51.510.382 - M | 51.510.385 - XXL |



NISHA

Kimono Kawai Flower Dark Blue
95% Viscose - 5% Elasthane

| | |
|-----------------|------------------|
| 51.510.386 - XS | 51.510.389 - L |
| 51.510.387 - S | 51.510.390 - XL |
| 51.510.388 - M | 51.510.391 - XXL |



NIELS

Kimono Good Nightingale Sand
95% Viscose - 5% Elasthane

| | |
|-----------------|------------------|
| 51.510.392 - XS | 51.510.395 - L |
| 51.510.393 - S | 51.510.396 - XL |
| 51.510.394 - M | 51.510.397 - XXL |



NIELS

Kimono Good Nightingale Green
95% Viscose - 5% Elasthane

| | |
|-----------------|------------------|
| 51.510.398 - XS | 51.510.401 - L |
| 51.510.399 - S | 51.510.402 - XL |
| 51.510.400 - M | 51.510.403 - XXL |

**TAHNEE**

Sport Top Kyoto Festival Tonal Terra
36% Cotton - 36% Modal - 28% Elasthane
51.521.133 - XS 51.521.136 - L
51.521.134 - S 51.521.137 - XL
51.521.135 - M 51.521.138 - XXL

**TAHNEE**

Sport Top Kyoto Festival Tonal Dark Blue
36% Cotton - 36% Modal - 28% Elasthane
51.521.139 - XS 51.521.142 - L
51.521.140 - S 51.521.143 - XL
51.521.141 - M 51.521.144 - XXL

**TULUM**

Sport Top Kyoto Festival Tonal Terra
48% Cotton - 48% Modal - 4% Elasthane
51.521.109 - XS 51.521.112 - L
51.521.110 - S 51.521.113 - XL
51.521.111 - M 51.521.114 - XXL

**TULUM**

Sport Top Kyoto Festival Tonal Dark Blue
48% Cotton - 48% Modal - 4% Elasthane
51.521.115 - XS 51.521.118 - L
51.521.116 - S 51.521.119 - XL
51.521.117 - M 51.521.120 - XXL

**TATUM**

Sport Top Leafy Dots Brown
48% Cotton - 48% Modal - 4% Elasthane
51.521.127 - XS 51.521.130 - L
51.521.128 - S 51.521.131 - XL
51.521.129 - M 51.521.132 - XXL

**TATUM**

Sport Top Leafy Dots Blue
48% Cotton - 48% Modal - 4% Elasthane
51.521.121 - XS 51.521.124 - L
51.521.122 - S 51.521.125 - XL
51.521.123 - M 51.521.126 - XXL

**NICOS**

Jacket Kyoto Festival Tonal Big Terra
95% Cotton - 5% Elasthane
51.515.013 - XS 51.515.016 - L
51.515.014 - S 51.515.017 - XL
51.515.015 - M 51.515.018 - XXL

**NICOS**

Jacket Kyoto Festival Tonal Big Dark Blue
95% Cotton - 5% Elasthane
51.515.019 - XS 51.515.022 - L
51.515.020 - S 51.515.023 - XL
51.515.021 - M 51.515.024 - XXL

**TAMARA**

Long Sleeve

Kyoto Festival Tonal Big Terra
95% Cotton - 5% Elasthane
51.511.381 - XS 51.511.384 - L
51.511.382 - S 51.511.385 - XL
51.511.383 - M 51.511.386 - XXL

**TAMARA**

Long Sleeve

Kyoto Festival Tonal Big Dark Blue
95% Cotton - 5% Elasthane
51.511.387 - XS 51.511.390 - L
51.511.388 - S 51.511.391 - XL
51.511.389 - M 51.511.392 - XXL

**NINNY**

Kimono

Kyoto Festival Tonal Big Terra
95% Cotton - 5% Elasthane
51.510.350 - XS 51.510.353 - L
51.510.351 - S 51.510.354 - XL
51.510.352 - M 51.510.355 - XXL

**NINNY**

Kimono

Kyoto Festival Tonal Big Dark Blue
95% Cotton - 5% Elasthane
51.510.356 - XS 51.510.359 - L
51.510.357 - S 51.510.360 - XL
51.510.358 - M 51.510.361 - XXL



BELINDA

Short Trousers Kyoto Festival Tonal Terra
36% Cotton - 36% Modal - 28% Elasthane
51.501.313 - XS 51.501.316 - L
51.501.314 - S 51.501.317 - XL
51.501.315 - M 51.501.318 - XXL



BELINDA

Short Trousers Kyoto Festival Tonal Dark Blue
36% Cotton - 36% Modal - 28% Elasthane
51.501.319 - XS 51.501.322 - L
51.501.320 - S 51.501.323 - XL
51.501.321 - M 51.501.324 - XXL



BUITER

Long Trousers Kyoto Festival Tonal Big Terra
95% Cotton - 5% Elasthane
51.500.621 - XS 51.500.624 - L
51.500.622 - S 51.500.625 - XL
51.500.623 - M 51.500.626 - XXL



BUITER

Long Trousers Kyoto Festival Tonal Big Dark Blue
95% Cotton - 5% Elasthane
51.500.627 - XS 51.500.630 - L
51.500.628 - S 51.500.631 - XL
51.500.629 - M 51.500.632 - XXL



BELLA

Long Trousers
Kyoto Festival Tonal Terra
36% Cotton - 36% Modal - 28% Elasthane
51.500.633 - XS 51.500.636 - L
51.500.634 - S 51.500.637 - XL
51.500.635 - M 51.500.638 - XXL



BELLA

Long Trousers
Kyoto Festival Tonal Dark Blue
36% Cotton - 36% Modal - 28% Elasthane
51.500.639 - XS 51.500.642 - L
51.500.640 - S 51.500.643 - XL
51.500.641 - M 51.500.644 - XXL



BELLA

Long Trousers
Leafy Dots Brown
36% Cotton - 36% Modal - 28% Elasthane
51.500.651 - XS 51.500.654 - L
51.500.652 - S 51.500.655 - XL
51.500.653 - M 51.500.656 - XXL



BELLA

Long Trousers
Leafy Dots Blue
36% Cotton - 36% Modal - 28% Elasthane
51.500.645 - XS 51.500.648 - L
51.500.646 - S 51.500.649 - XL
51.500.647 - M 51.500.650 - XXL



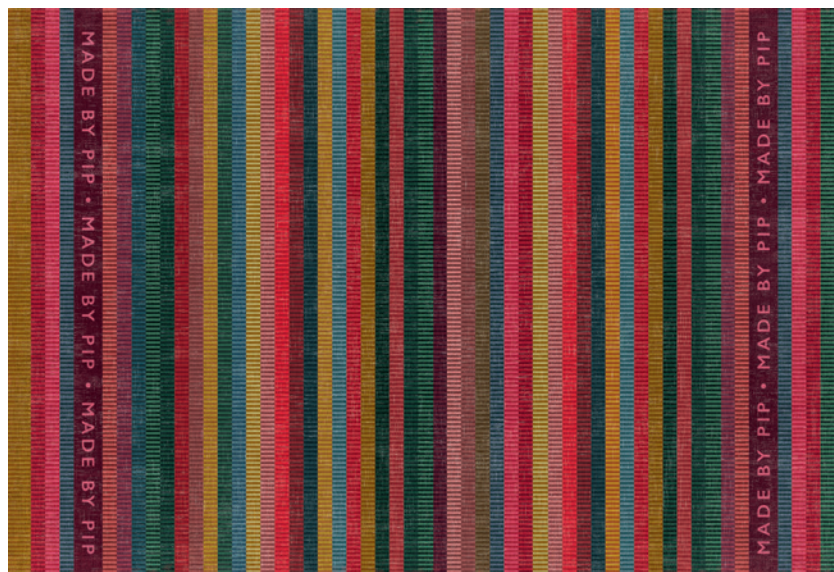
51.273.274

Promotional Bag Small Kyoto Festival
Dark Blue 38x17x28cm
PET - 10/50



51.273.251

Promotional Bag Winter Wonderland Overall
Dark Blue 38x15x44.5cm
PET - 10/50



Carpet Jacquard Stripe Multi

100% Cotton

51.110.096 - 185x120cm
51.110.097 - 230x155cm
51.110.098 - 275x185cm
51.110.099 - 300x200cm
51.110.100 - 340x80cm

• SUSTAINABILITY & WASH CARE INSTRUCTIONS •

• SUSTAINABILITY •

Pip Studio does not own any factories, we work together with our carefully selected partners. We believe that the manufacturing of our products should be done in a responsible way. We aim to create collections with well-thought-out solutions that bring a sparkle to everyday life. Our partners philosophy is to build a trustworthy and long-term relationship with their suppliers in order to ensure continuity of the quality, look and delivery of our collections.



ENERGY

OUR ACTIONS

- Integrated system of heat exchange
- Weekly waste, exhausts and piping audits
- Our electricity is all produced by renewable sources of energy
- Design studio partially heated by waste heat



WATER

OUR ACTIONS

- Whenever technically possible we use processes with lower water consumption
- Best in class water usage in dyeing and washing processes
- We do not use any chemicals that harm the environment or the end consumer
- We have our own water treatment system



HEALTH - SAFETY &

SOCIAL RESPONSIBILITY

OUR ACTIONS

- Total compliance with all European laws and standards
- Transparent action, information sharing and open behavior
- Promoters of social empowerment



ENVIRONMENT

OUR ACTIONS

- Active project to reduce CO2 emissions
- Recycling programs for textile waste
- Optimisation cutting studies to reduce fabric waste
- We choose to use recycled paper in our workspace
- Environmental licence - NP EN ISO 14001
- GOTS certified

• WASH CARE INSTRUCTIONS •

To enjoy your Pip Studio products till the end of times, we recommend the following wash care instructions:

FOR ALL HOMEWEAR



30 DEGREES
MACHINE WASH



DO NOT
TUMBLE DRY



DO NOT
BLEACH



IRON LOW
IF NEEDED



DO NOT
DRY CLEAN

FOR ALL HOME SPORTSWEAR



40 DEGREES
MACHINE WASH



DO NOT
TUMBLE DRY



DO NOT
BLEACH



IRON AT
110 DEGREES



DRY
CLEAN



Our homewear & home sportswear is manufactured and produced in Portugal, Turkey and India.



THE FALL WINTER HOMEWEAR & HOME SPORTSWEAR
COLLECTION IS AVAILABLE FROM AUGUST 2022

This brochure is published by
New Edition Homewear B.V.

New Edition Head Office

Hendrik Figeeweg 1-0004, FIGEEhal 2
2031 BJ Haarlem, The Netherlands
+31 (0)23 - 800 99 00
info@newedition.nl
newedition.nl

Sales Office Germany

Mühlwiesenstraße 14
D-34270 Schauenburg
Germany
+49 (0)5601 - 929 75 70
verkauf@newedition.nl
newedition.nl

Visit our website **newedition.nl**
for an overview of our retailers and distributors worldwide
and our German sales representatives per region.

2022 Copyright ©.

Pip Studio® is a registered trademark.

All rights reserved. No part of this publication may be reproduced,
stored in a retrieval system or transmitted in any form or
by any means, electronic, mechanical, photocopying, recording
or otherwise, without the prior permission of
New Edition Homewear B.V.

Changes in colours and styles with reservation.



Discover the Pipworld at
pipstudio.com

Follow Pip Studio on
facebook.com/pipstudio.official
instagram.com/pipstudiocom



THE FALL WINTER BAGS COLLECTION IS AVAILABLE FROM AUGUST 2022

Check our latest brochure at [newedition.nl](https://www.newedition.nl)



PIP STUDIO ® IS A REGISTERED TRADEMARK © 2022 - WWW.PIPSTUDIO.COM
NEW EDITION HOMEWEAR B.V. - INFO@NEWEDITION.NL - NEWEDITION.NL