



PIP STUDIO

• AMSTERDAM •

BAGS COLLECTION FALL WINTER 2022









## THE HARE AND THE NIGHTINGALE

*Do you remember Yuki and Emi, my Japanese friends? They asked Olle and me to join them on their great hike through the woods. Officially, their goal is to find mushrooms for the restaurant. Unofficially, they use it as an excuse to get away from it all and catch up. They spend the night in their log cabin that makes you feel like you have been transported to the Japanese Alps and has a name straight out of a fairy tale: The Hare and the Nightingale.*

**T**he cabin is made entirely out of wood, there is a Japanese lamp in every room and on the ground floor there is even a genuine spiral staircase. Olle and I arrived there on a Friday. It was a gorgeous autumn day, so we decided to explore the area on our own. Olle said he knew where to go: the best mushrooms grow near ancient trees. He moved some fallen leaves around here and there with his hiking shoe and to his credit we did find some mushrooms, but not a whole lot. As time went by, we ventured deeper into the woods and strayed farther and farther from the path. You can probably guess where this is going: by the time we had gathered enough mushrooms to surprise Yuki and Emi, neither one of us had the faintest idea of where we were. We were truly lost in the woods. I took out my phone but of course the battery had died at the worst possible time. Olle began to laugh. We had to go about this in a completely different way. "The forest will show us the way," Olle said. He extended his arm to me. "We have to look for the clues that nature is giving us. What can we hear? What can we see? Along the way, let's also gather some wood for the fireplace."

I love Olle and his boundless optimism, but I must admit I was not feeling very confident. I heard the soft rustling of the wind and the creaking of the branches overhead. I could not hear anything that told me how to get back to the cabin, though. I noticed that the light had begun to fade from the sky. Then we saw a small hare with ears perked up between the

trees in front of us. Was it staring directly at us? We felt we had no choice but to follow it. It kept running a short distance ahead before stopping to give us time to catch up. It was getting darker and colder and just as a light drizzle began to fall, we found ourselves on a wider path and saw the cabin in the distance. A deer gave us a curious look from between the trees. Olle and I were struck dumb. Just as we felt things couldn't get more incredible, we heard the song of a nightingale. We approached the cabin through the gorgeously landscaped garden. Emi was waiting for us at the door. It was like she had known exactly when we would arrive. She was wearing a housecoat whose colours matched those of the forest around her. We could see candles burning inside. "Come in quickly," she said, "we were just about to have some tea."

Yuki was sitting in the conversation pit. She was wearing a kimono that, just like her quilt, was made from Emi's old collection of ribbons: "We're going to play a game!"

Olle sat down next to her on a sheepskin. I found a spot on the carpet near the fireplace, glanced at the small stuffed fox near me and suddenly felt overcome with inspiration for the new autumn collection.

I hope you have an amazing winter.

Hugs and kisses from Pip



















## • FASHION BAGS •



**51.273.302**  
Phone Bag Kyoto Festival  
Dark Pink - 11x18x1 cm  
Artificial Leather - 1/48



**51.273.303**  
Phone Bag Kyoto Festival  
Dark Pink - 13x20x4.7 cm  
Artificial Leather - 1/72



**51.273.300**  
Wallet Suki  
Pink - 14.2x10x2.3 cm  
Artificial Leather - 1/96



**51.273.301**  
Wallet Pocket Suki  
Pink - 19.5x11x4.5 cm  
Artificial Leather - 1/60



**51.273.298**  
Wallet Square Kyoto Festival  
Dark Pink - 11.5x11.5x2.5 cm  
Artificial Leather - 1/96



**51.273.299**  
Wallet Kyoto Festival  
Dark Pink - 18x11x3 cm  
Artificial Leather - 1/60



**51.273.304**  
Cross Body Bag Small Suki  
Pink - 22x13.5x6 cm  
Artificial Leather - 1/36



**51.273.305**  
Cross Body Medium Kyoto Festival  
Dark Pink - 23.5x18x7.5 cm  
Artificial Leather - 1/24



**51.273.306**  
Cross Body Flap Kyoto Festival  
Dark Pink - 25x7x20 cm  
Artificial Leather - 1/12





**51.273.308**  
Shopper Small Kyoto Festival  
Dark Pink - 33/39x22x10 cm  
Artificial Leather - I/I2



**51.273.307**  
Backpack Kyoto Festival  
Dark Pink - 28x36x11 cm  
Artificial Leather - I/I2



**51.273.309**  
Shopper Medium Kyoto Festival  
Dark Pink - 32/47x31x18.5 cm  
Artificial Leather - I/I2



**51.273.310**  
Shopper Square Kyoto Festival  
Dark Pink - 33x36x10 cm  
Artificial Leather - I/I2



## • TRAVEL BAGS •



**51.273.315**  
Tote Bag Velvet Quiltey Days  
Red - 66x20x44 cm  
Velvet - 1/24



**51.273.313**  
Tote Bag Kyoto Festival  
Dark Pink - 66x20x44 cm  
Nylon/Satin - 1/24



**51.273.311**  
Weekend Bag Medium Kyoto Festival  
Dark Pink - 57x22x37 cm  
Nylon/Satin - 1/12



**51.273.312**  
Weekend Bag Large Kyoto Festival  
Dark Pink - 65x25.5x35 cm  
Nylon/Satin - 1/12















## • COSMETIC BAGS •



**51.274.188**  
Cosmetic Purse Small Velvet  
Quiltey Days Red - 19x12x8.5 cm  
Velvet - 1/36



**51.274.189**  
Cosmetic Purse Large Velvet  
Quiltey Days Red - 26x18x12 cm  
Velvet - 1/24



**51.274.180**  
Cosmetic Flat Pouch Small Kyoto Festival/Suki  
Dark Pink - 19.5x13x1 cm  
Artificial Leather - 1/48



**51.274.181**  
Cosmetic Flat Pouch Medium Kyoto Festival  
Dark Pink - 24x15.5x1 cm  
Artificial Leather - 1/48



**51.274.182**  
Cosmetic Bag Combi Kyoto Festival  
Dark Pink - 26x18x7.5cm/22x13x1 cm  
Artificial Leather - 1/12



**51.274.178**  
Cosmetic Bag Triangle Small Suki  
Pink - 19/15x12x6 cm  
Artificial Leather - 1/36



**51.274.179**  
Cosmetic Bag Triangle Medium Kyoto Festival  
Dark Pink - 24/17x16.5x8 cm  
Artificial Leather - 1/24



**51.274.185**  
Cosmetic Bag Square Small Kyoto Festival  
Dark Pink - 20x10.5x7.5 cm  
Artificial Leather - 1/48





**51.274.190**  
Cosmetic Purse Extra Large Velvet  
Quiltey Days Red - 30x20.7x13.8 cm  
Velvet - 1/16



**51.274.191**  
Cosmetic Flat Pouch Large Velvet  
Quiltey Days Red - 30x22x1 cm  
Velvet - 1/60



**51.274.187**  
Cosmetic Zipper Pouch Suki  
Pink - 21x12.5x3.5 cm  
Artificial Leather - 4/64



**51.274.186**  
Cosmetic Zipper Pouch Kyoto Festival  
Dark Pink - 21x12.5x3.5 cm  
Artificial Leather - 4/64



**51.274.183**  
Cosmetic Purse Medium Kyoto Festival  
Dark Pink - 22.5x9.5x15 cm  
Artificial Leather - 1/36



**51.274.184**  
Cosmetic Purse Large Kyoto Festival  
Dark Pink - 26x18x12 cm  
Artificial Leather - 1/24



**51.274.177**  
Beauty Case Square Large Kyoto Festival  
Dark Pink - 27x19x10 cm  
Artificial Leather - 1/12



## • BATHROOM ACCESSORIES •



### 51.III.101

Set/3 Bathroom Accessories Kyoto Festival Dark Pink  
Drinking Mug 300 ml, Soap Dispenser 440 ml, Tray 27x12x1.5 cm  
1/12 - In Gift Box



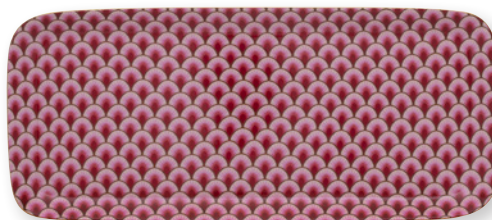
### 51.III.098

Drinking Mug Suki  
Dark Pink - 300 ml  
6/48



### 51.III.099

Soap Dispenser Kyoto Festival  
Dark Pink - 440 ml  
4/32



### 51.III.100

Tray Suki  
Dark Pink - 27x12x1.5 cm  
6/36























## • FASHION BAGS •



**51.273.281**  
Phone Bag Kyoto Festival  
Green - 11x18x1 cm  
Artificial Leather - 1/48



**51.273.282**  
Phone Bag Kyoto Festival  
Green - 13x20x4.7 cm  
Artificial Leather - 1/72



**51.273.317**  
Wallet Suki  
Green - 14.2x10x2.3 cm  
Artificial Leather - 1/96



**551.273.318**  
Wallet Pocket Suki  
Green - 19.5x11x4.5 cm  
Artificial Leather - 1/60



**51.273.277**  
Wallet Square Kyoto Festival  
Green - 11.5x11.5x2.5 cm  
Artificial Leather - 1/96



**51.273.279**  
Wallet Kyoto Festival  
Green - 18x11x3 cm  
Artificial Leather - 1/60



**51.273.285**  
Cross Body Bag Small Suki  
Green - 22x13.5x6 cm  
Artificial Leather - 1/36



**51.273.286**  
Cross Body Medium Kyoto Festival  
Green - 23.5x18x7.5 cm  
Artificial Leather - 1/24



**51.273.288**  
Cross Body Flap Kyoto Festival  
Green - 25x7x20 cm  
Artificial Leather - 1/12





**51.273.290**  
Shopper Small Kyoto Festival  
Green - 33/39x22x10 cm  
Artificial Leather - I/12



**51.273.289**  
Backpack Kyoto Festival  
Green - 28x36x11 cm  
Artificial Leather - I/12



**51.273.291**  
Shopper Medium Kyoto Festival  
Green - 32/47x31x18.5 cm  
Artificial Leather - I/12



**51.273.292**  
Shopper Square Kyoto Festival  
Green - 33x36x10 cm  
Artificial Leather - I/12



## • TRAVEL BAGS •



**51.273.316**  
Tote Bag Velvet Quiltey Days  
Green - 66x20x44 cm  
Velvet - 1/24



**51.273.314**  
Tote Bag Kyoto Festival  
Green - 66x20x44 cm  
Nylon/Satin - 1/24



**51.273.294**  
Weekend Bag Medium Kyoto Festival  
Green - 57x22x37 cm  
Nylon/Satin - 1/12



**51.273.296**  
Weekend Bag Large Kyoto Festival  
Green - 65x25.5x35 cm  
Nylon/Satin - 1/12















## • COSMETIC BAGS •



**51.274.173**  
Cosmetic Purse Small Velvet  
Quilted Green - 19x12x8.5 cm  
Velvet - 1/36



**51.274.174**  
Cosmetic Purse Large Velvet  
Quilted Green - 26x18x12 cm  
Velvet - 1/24



**51.274.195**  
Cosmetic Flat Pouch Small Kyoto Festival/Suki  
Green - 19.5x13x1 cm  
Artificial Leather - 1/48



**51.274.196**  
Cosmetic Flat Pouch Medium Kyoto Festival  
Green - 24x15.5x1 cm  
Artificial Leather - 1/48



**51.274.197**  
Cosmetic Bag Combi Kyoto Festival  
Green - 26x18x7.5cm/22x13x1 cm  
Artificial Leather - 1/12



**51.274.193**  
Cosmetic Bag Triangle Small Suki  
Green - 19/15x12x6 cm  
Artificial Leather - 1/36



**51.274.194**  
Cosmetic Bag Triangle Medium Kyoto Festival  
Green - 24/17x16.5x8 cm  
Artificial Leather - 1/24



**51.274.200**  
Cosmetic Bag Square Small Kyoto Festival  
Green - 20x10.5x7.5 cm  
Artificial Leather - 1/48





**51.274.175**  
Cosmetic Purse Extra Large Velvet  
Quilted Green - 30x20.7x13.8 cm  
Velvet - 1/16



**51.274.176**  
Cosmetic Flat Pouch Large Velvet  
Quilted Green - 30x22x1 cm  
Velvet - 1/60



**51.274.201**  
Cosmetic Zipper Pouch Kyoto Festival  
Green - 21x12.5x3.5 cm  
Artificial Leather - 4/64



**51.274.202**  
Cosmetic Zipper Pouch Suki  
Green - 21x12.5x3.5 cm  
Artificial Leather - 4/64



**51.274.198**  
Cosmetic Purse Medium Kyoto Festival  
Green - 22.5x9.5x15 cm  
Artificial Leather - 1/36



**51.274.199**  
Cosmetic Purse Large Kyoto Festival  
Green - 26x18x12 cm  
Artificial Leather - 1/24



**51.274.192**  
Beauty Case Square Large Kyoto Festival  
Green - 27x19x10 cm  
Artificial Leather - 1/12



## • BATHROOM ACCESSORIES •



### 51.III.105

Set/3 Bathroom Accessories Kyoto Festival Green  
 Drinking Mug 300 ml, Soap Dispenser 440 ml, Tray 27x12x1.5 cm  
 1/12 - In Gift Box



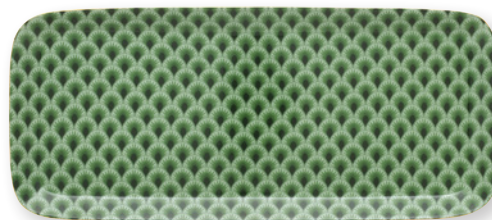
### 51.III.102

Drinking Mug Suki  
 Green - 300 ml  
 6/48



### 51.III.103

Soap Dispenser Kyoto Festival  
 Green - 440 ml  
 4/32



### 51.III.104

Tray Suki  
 Green - 27x12x1.5 cm  
 6/36



THE BAGS COLLECTION IS AVAILABLE  
FROM AUGUST 2022

This brochure is published by  
New Edition Home B.V.

**New Edition Head Office**

Hendrik Figeeweg 1-0004, FIGEEhal 2  
2031 BJ Haarlem, The Netherlands  
+31 (0)23 - 800 99 00  
info@newedition.nl  
newedition.nl

**Sales Office Germany**

Mühlwiesenstraße 14  
D-34270 Schauenburg  
Germany  
+49 (0)5601 - 929 75 70  
verkauf@newedition.nl  
newedition.nl

Visit our website **newedition.nl**  
for an overview of our retailers and distributors worldwide  
and our German sales representatives per region.

2022 Copyright ©.

Pip Studio® is a registered trademark.

All rights reserved. No part of this publication may be reproduced,  
stored in a retrieval system or transmitted in any form or  
by any means, electronic, mechanical, photocopying, recording  
or otherwise, without the prior permission of  
New Edition Home B.V.

Changes in colours and styles with reservation.







PIP STUDIO © IS A REGISTERED TRADEMARK © 2022 - [WWW.PIPSTUDIO.COM](http://WWW.PIPSTUDIO.COM)  
NEW EDITION HOME B.V. - [INFO@NEWEDITIONHOME.NL](mailto:INFO@NEWEDITIONHOME.NL) - [NEWEDITIONHOME.NL](http://NEWEDITIONHOME.NL)