





Belleek's reputation has been built on product excellence. Only Belleek of the highest quality is ever put on sale.

Back in 1857, the pottery's founder John Caldwell Bloomfield declared that any piece with even the slightest flaw should be destroyed.

Over 163 years later, this golden rule is still strictly adhered to. The result is perfection.



## Contents

Edition Piece	41
Masterpiece Collection	42 - 44

## Tableware

Connemara Collection	45
Beverage Mug Collection	46
Galway Weave	47
Claddagh	48 - 49
Shamrock	50 - 51
Harp Shamrock	52
Sayings Mugs	53
Mug of Hope	54

## Giftware

Votives	55
Annual Basket	56
Baskets	57 - 59
Claddagh & Wild Rose	60
Irish Flax	61
Daisy	62
Lighting	63
Shamrock Vases	64 - 65
Shamrock Giftware	66
Baby Gifts	67
Frames	67
Trinket Boxes	68
Celebration Plates	69
Christian Gifts	70
Personalised/Corporate	71
Inscriptions & Monogramming	
<b>Christmas</b>	
Annual Ornament	72
Hanging Ornaments	73 - 75

# Handcrafted in Ireland since 1857

Each piece of Belleek is created by 16 individual artisans. From design to production to quality control at our historic pottery, a process that has changed very little since 1857.



## 1. Design



Belleek has a dedicated team of in-house designers who participate in varied Market Research and work closely with the sales team to introduce new ideas/concepts to the marketplace. Drawings are produced and after a careful selection process the most commercial designs make it to the modelling phase.

## 2. Modelling



A three-dimensional plaster or clay model is created from the design drawings. This is an accurate reproduction of the design showing every intricate detail and surface relief.

## 3&4. Block and Case Mould (Master Mould)



Belleek Parian China (with the exception of basket and flower making) is slip cast. This is a technique where liquid clay body slip is poured into plaster moulds and allowed to form a layer (the cast) on the inside cavity of the mould. The master mould is a transfer reverse of the model. The first mould taken from the master case is called

the 'Block Mould'. This is retained to make the next Case Mould whenever the first wears out.



A second Master Block Mould is created and stored in Belleek's Master Mould Chamber. This will never be used, unless the quality of the first block mould deteriorates. Belleek's Master Mould Chamber contains Block Moulds dating as far back as the 1860's.

## 5. Mouldmaking (Working Moulds)

The Master Case Mould is used to make the working plaster of Paris moulds from which the cast ware is produced. Each mould will last for approximately forty casts after which a new working mould will replace it.

## 6. Slip

This is the material that becomes Belleek Parian China. It begins as a creamy coloured liquid formed by mixing China Clay, Feldspar and Frit. The slip mixture is prepared on a daily basis and after it is measured and checked for its consistency it is sent by pipe to the Casters bench.

## 7. Basket and Flower Making



Belleek's world famous Baskets and Flowers are passionately created by hand in Ireland. The production of such intricate and meticulous detail requires the use of a more pliable substance than that used on other Belleek products. In order to create such a flexible, yet strong material a mixture of slip and salvage (collected from the fettler's bench) is ground into a fine white powdery consistency. Gum Arabic is then added to the combination making the clay more manageable. The mixture is kneaded and hand beaten on an oak block using two oak beaters to remove air. The clay is then pressed through a



Dod box, which produces spaghetti like strands. The base of the basket is hand woven using a weave of two, three or four strands. The base of the basket is also created by hand in an inverted position as one by one the rods are joined with the plaited base. While the basket dries the feet, flowers and handles are crafted. All flowers, stems, buds, twigs and shamrocks are made entirely by hand. Should a flower require sixty petals, each part of the flower is crafted one piece at a time.



## 8. Casting

The moulds are filled to the top with slip. After the allotted time, the excess slip is poured off and the moulds are left to dry. As the piece dries it shrinks away from the mould and in time it can be gently separated. The slip has now become clay; this is called the 'Green Ware Stage'.

## 9. Fettling



Fettling is the skilled sharpening of delineation of the pattern. This intricate process also includes the elimination of seams, smoothing, rounding of edges and the fitting together of parts e.g. spout and handle to teapots, head to a body, etc.

Finished pieces are left to dry completely before being sent to the kilns.

## 10. Biscuit Firing

Biscuit firing is perhaps the most risky phase, as this is the time when contraction occurs. Shrinkage can be as large as sixteen percent of the 'Green Wares' dimensions. Product is placed in the Kilns which are fired to 1,200 degrees centigrade. After this the cooling process must be very gradual. A sudden change in room temperature could shatter the ware. Therefore, the ware (now referred to as the biscuit) must remain in the cooling kiln overnight. The next morning it is transferred to the, 'Inspection and Cleaning Area.' Here each piece that fails the inspection is destroyed, as anything less than perfect is not acceptable in Belleek.

## 11. Dipping



Belleek glaze is made from a special recipe including borax and frit. The result is a distinctive pearl like surface on the item. Each piece is dipped once by hand and then dried for about two minutes under an infra-red heater.

## 12. Gloss Firing

The dipped ware is transferred to the gloss (called Glost in Ireland) kiln room where gloss firing blends the glaze to the Parian at a temperature of 1,000 degrees centigrade.

## 13. Stamping



At this stage the piece receives its third inspection; checking in particular for glaze faults. Perfect items are given the famous Belleek trademark stamp. This stamp indicates when the product was made. At present Belleek is using a new sixteenth (brown) mark similar to the previous mark except the inclusion of Made in Ireland and introduced in 2019.



## 14. Painting

Belleek ware proceeds through the painting department, depending on the type of decoration required. Some items such as figurines miss out on this stage altogether and go straight to packing.

## 15. Enamel Firing



The penultimate step is the Enamel Kiln, where each piece receives its final firing at 760 degrees centigrade. Here the trademark is fused onto the bottom and the paint permanently fixed.

## 16. Packing

Product that has been perfect so far will receive its fourth and final inspection. Those accepted are packed in tissue paper and boxed along with any additional material such as romance cards or instructions. The finished item leaves Belleek to continue its journey to the various corners of the globe, to the homes of the many Belleek collectors and admirers worldwide.





# Trademarks & Collectors Society

## Belleek Trademarks

All Belleek marks, with minor exceptions, include symbols which are unmistakably Irish, i.e. the Irish Wolfhound with the head turned to face one of Ireland's distinctive round towers - the model for which is believed to have been Devenish Round Tower on the Lower Lough Erne's Devenish Island. The Irish harp and two sprigs of shamrock border the ends of a banner at the base of the design which carries the single word BELLEEK in capital letters. The years given denote the approximate date of production.

Date your Belleek 1863-2019

New Belleek trademark backstamp introduced in January 2019



2019-



Ribbon stamp used on pieces too small or restricting to place the regular trademark.



1863-1891



1891-1926



1926-1946



1946-1955



1955-1965



1965-1980



1980-1993



1993-1997



1997-2000



2000



2001-2007



2007



2008-2011



2011-2014



2014-2019

## Belleek Collectors International Society

Some of your customers may already be the owners of a few treasured pieces of Belleek, or perhaps they would like to find out more about the World famous Parian China. So why not let them know about the Belleek Collectors International Society!

With over 8,000 Society members worldwide and twenty-four chapters, new members will be part of a world-wide group of Belleek enthusiasts.

Every year a special membership piece is created and offered exclusively to the members of the Society.

For more information and details join on-line at:

[www.belleek.com](http://www.belleek.com)

There is no membership cost.



**NEW**

**4667**

Love Knot Cross  
10.2cm (W) x 19.3cm (H)



Belleek Classic

## Edition Piece 2020



### Love Knot Cross

Designer Clare Conway has created the Love Knot Cross as an extension to Claire Rowe's previous 2019 Edition Piece, the Love Knot Trinket Box. The Love Knot Cross represents eternity - the featured knot has no start or finish and is symbolic of loyalty, faith, friendship and love. They generally consist of two interlocking knots made with parallel cords.

The Love Knot Cross is a classic yet simplistic design and is decorated with the iconic hand painted Belleek shamrock. One side features the Love Knot motif consisting of two interlocking hearts and the other side is decorated with subtle Celtic banding. The Love Knot Cross includes an exclusive back stamp and the signature of the designer. This piece will only be available during 2020.



**NEW**

**0318**

Neptune Mugs (Set of 2)  
9.7cm (W) x 13.5cm (H) x 426mlC



Belleek Classic: Giftware

## Masterpiece Collection

The “Belleek Masterpiece Collection” is a celebration of the craft of creating Belleek and the wonderful legacy of great and varied design styles since the company was founded, over one hundred and sixty years ago, in 1857.



This Collection is a combination of old designs from our extensive archive along with many new creations inspired by our rich history of unique and innovative design. To add to this mix, some of the older pieces in the group have been painted differently from their original style of decoration.

Each of the eighteen pieces in this compilation is marked by a Masterpiece stamp emphasising the excellence and significance of every piece in the collection.

**0298**

Neptune Tea for One  
15.7cm (L) x 11.2cm (W) x 11.4cm (H) x 278mlC



**4191**

Celtic Mantel Clock  
22.4cm (L) x 6.9cm (W) x 15.7cm (H)





**0631**  
 Male Greyhound Sitting  
 11.7cm (L) x 7.6cm (W) x 16.3cm (H)



**0039**  
 Shamrock Round  
 Bottomed Jug  
 11.7cm (L) x 8.9cm (W) x 11.4cm (H)



**2008**  
 Devenish Round  
 Tower  
 15.7cm (D) x 17.8cm (H)



**0628**  
 Female Greyhound Sitting  
 11.7cm (L) x 7.6cm (W) x 15.7cm (H)



**0043**  
 Shamrock Honey Pot  
 and Stand  
 13.2cm (L) x 13cm (W) x  
 15.5cm (H)



**0456**  
 Pig L/S  
 10.1cm (L) x 5.6cm (W) x 7.6cm (H)

**0626**  
 Meditation  
 11.4cm (L) x 11.2cm (W) x 36.6cm (H)



**0627**  
 Affection  
 11.4cm (L) x 11.2cm (W) x 36.6cm (H)



**2397**  
 Elephant  
 20.3cm (L) x 7.4cm (W) x 14cm (H)



**0647**  
 Prince of Wales Icepail  
 20.3cm (W) x 49.8cm (H)



Belleek Classic: Giftware

# Masterpiece Collection

**NEW**

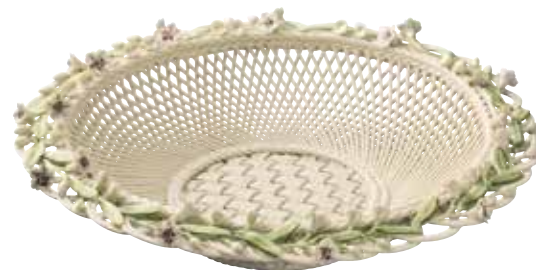


**0569**  
 Oval Covered Basket S/S  
 17.8cm (L) x 21.8cm (W) x 14cm (H)



**0588**  
 Oval Covered Basket L/S  
 29cm (L) x 21.3cm (W) x 16.3cm (H)

**4604**  
 Laurel Basket  
 26.7cm (D) x 5.7cm (H)



**4544**  
 Round Covered Basket S/S  
 17.3cm (D) x 11.4cm (H)

**3600**  
 Queens Basket  
 19.8cm (L) x 15.7cm (W) x 8.1cm (H)



Belleek Classic: Teaware / Giftware

## Connemara Collection

These beautiful hand painted tableware designs have been inspired by the Irish region of Connemara, an area of outstanding beauty in the West of Ireland facing the Atlantic. The National Park is a place of contrasts, colour and wilderness with its mountains, lakes, hand built stone walls and thatched cottages. You are expected to give way to the sheep which are usually sitting in the middle of the road!

The area's main town, Clifden has several venues for traditional Irish music and still contains a vast part of the Connacht Irish-speaking Gaeltacht.

A little piece of Ireland, the Tea Plate, Mug and Egg Cup and Spoon Set make a beautiful breakfast collection. As each piece of Belleek is unique, they will also make interesting conversational pieces to set proudly on display on your kitchen dresser. Hand wash only.



**NEW**

**NEW**



**NEW**



**4558**  
Connemara Mug  
11.4cm (W) x 10.2cm (H) x 375mlC

**NEW**



**4579**  
Connemara Tea Plate  
21.6cm (D) x 1.8cm (H)

**4599**  
Connemara Egg  
Cup & Spoon  
Egg Cup 5cm (D) x 6.4cm (H)  
Spoon 2.5cm (W) x 11.4cm (L)



**4577**  
Connemara 9" Vase  
14.7cm (D) x 22.9cm (H)





**NEW**



Belleek Classic: Teaware

## Beverage Mug Collection

It is thought that lustre glazes were applied to pottery in Mesopotamia as early as the 9th century and the technique later became popular in Persia and Syria in the 12th century. Unlike these early Eastern lustres that were bold and brightly coloured, Belleek Pottery founding partner, Robert Armstrong strived to produce lustreware with much softer colours inspired by the iridescent qualities of sea shells. Here at Belleek Pottery we have been using lustre decoration since the 1870's to adorn pieces with iridescent washes of colour and mother of pearl. The Lustre Mug Collection has been developed to celebrate this long established use of lustre, where it has been applied to fun contemporary shapes to create a modern twist on a traditional technique.



**NEW**

**4529**

Icing Mug

11.9cm (W) x 10.2cm (H) x 295mlC



**NEW**

**4527**

Flex Mug

11.9cm (W) x 7.9cm (H) x 295mlC



**4138**

Celtic Mugs (Set of 2)

12.2cm (W) x 10.2cm (H) x 295mlC each



**4393**

Irish Craft Mugs (Set of 4)

11.4cm (W) x 10.7cm (H) x 295mlC each

Belleek Classic: Tableware

## Galway Weave

Hand weaving and hand knitting, originating in the west of Ireland, have both been popular since the 17th century. The designers at Belleek have been inspired by the rustic but beautiful patterns found in both traditional hand weaving and hand knitting.

Each unique pattern originates from different families and holds its own name and story. Galway Weave is complemented by accent patterns, such as Cable and Scallop, which can be mixed to enhance your table.

All tableware is dishwasher, microwave, freezer and oven safe to 375F.



**4079**

Galway Weave Cup & Saucer  
Cup 10.9cm (L) x 8.4cm (W) x 7.9cm (H) x 284mLC  
Saucer 16.5cm (D)



**4125**

Galway Weave  
15oz Mug (Set of 2)  
12.7cm (W) x 10.2cm (H) x 295mLC each

**4109**

Galway Weave Soup Bowl  
15.2cm (D) x 6.4cm (H) x 426mLC



**4105**

Galway Weave  
Sugar Bowl  
9.7cm (D) x 11.4cm (H) x 284mLC



**4087**

Galway Weave  
Beverage Pot  
25.4cm (L) x 16cm (W) x 17.8cm (H) x 1479mLC

**4104**

Galway Weave Cream Jug  
10.7cm (L) x 8.1cm (W) x 12.7cm (H) x 284mLC



**4096**

'Cable'  
Accent Plate  
22.6cm (D)



**4083** Galway Weave Dinner Plate 27.4cm (D)

**4099** 'Scallop' 8.9" Accent Plate 22.6cm (D)

**4085** Galway Weave Side Plate 19.3cm (D)





Belleek Classic: Tableware

## Claddagh

The Belleek Claddagh Collection is inspired by the history of the Claddagh which goes back over four hundred years when a Spanish goldsmith fell in love with a girl from the Claddagh village. He crafted the first Claddagh ring for her. Since then the Claddagh ring has become a token of love throughout the world. Its symbols of a heart under a crown held by hands represent love, friendship and loyalty.

All tableware is dishwasher, microwave, freezer and oven safe.



**4211**  
Claddagh Accent Plate  
22.9cm (D) x 12.5cm (H)



**4219**  
Claddagh Dinner Plate  
26.4cm (D)



**4216**  
Claddagh Bowls Set of 2  
15.2cm (W) x 7.6cm (H) x 591mlC each

**4218**  
Claddagh 5" Plate  
19.1cm (D)





**4227**

Claddagh Butter Dish  
17.3cm (L) x 10.2cm (W) x 10.2cm (H)

**4207**

Claddagh 6 Mugs Gift Box  
12.2cm (W) x 10.1cm (H) x 295mlC each  
Box size 38.1cm (D) x 10.2cm (H)



**4212**

Claddagh Pitcher  
20.3cm (L) x 11.4cm (W) x 20.3cm (H) x 994mlC

**4226**

Claddagh Serving Bowl  
26.7cm (D) x 11.7cm (H) x 2070mlC



**4221**

Claddagh Cream Jug  
13.5cm (L) x 8.9cm (W) x 9.9cm (H)  
x 295mlC



**4222**

Claddagh Sugar Bowl  
9.7cm (D) x 12.2cm (H)



**4131**

Claddagh Mugs (Set of 2)  
12.2cm (W) x 10.1cm (H) x 295mlC each



**4133**

Claddagh Mugs (Set of 4)  
12.2cm (W) x 10.1cm (H) x 295mlC each



**4217**

Claddagh Beverage Pot  
17.8cm (L) x 10.7cm (W)  
x 16cm (H) x 591mlC





Belleek Classic: Tableware

# Shamrock

Shamrock Tableware, with its basketweave, is a timeless design first created in the 1880s. The simplicity of the pattern is based on the weave used in wickerwork baskets, once a common feature of both town and country. The design also cleverly uses the stems of the shamrocks to shape such features as the handles and details of the design. It remains an iconic collection, one symbolic of Belleek's long craft tradition.

Dishwasher, microwave and oven safe.

^not suitable for dishwasher

**NEW**



**1329**

Shamrock Butter Dish ^  
17.3cm (L) x 10.2cm (W)  
x 10.2cm (H)

**2529**

Irish Coffee Mugs Pair  
8.9cm (L) x 8.4cm (W) x 14cm (H) x  
237mlC each



**4409**

Shamrock Spoon Rest  
8.4cm (L) x 25.4cm (W) x 2.8cm (H)



**0004**

Shamrock Cup & Saucer ^  
Teacup 11.4cm (W) x 7.1cm (H) x  
177mlC and Saucer 16.5cm (D)



**0144**

Basketweave Mugs (set of 2)  
12.4cm (W) x 8.1cm (H) x 237mlC each



**1649**

Shamrock Spoon and  
Teabag Rest  
14.2cm (L) x 8.5cm (W) x 4.4cm (H)



**0019**

Shamrock Sugar Bowl ^  
10.2cm (W) x 9.1cm (H)



**0016**

Shamrock Teapot ^  
25.4cm (W) x 14cm (H) x 1035mlC



**0020**

Shamrock Cream Jug ^  
13.3cm (W) x 7.6cm (H)

**0093**

Shamrock Mug ^  
12.7cm (W) x 10.2cm (H) x 325mlC



**0008**

Shamrock Bread Plate ^  
28.6cm (D)

**0007**

Shamrock Salad Plate  
22.4cm (D)



**0176**

Shamrock 6" Bowl  
15.2cm (D) x 7.4cm (H)



**0036**

Shamrock Dinner Plate  
29.2cm (D) x 2.5cm (H)



**0005**

Shamrock Side Plate  
19cm (D)



**2404**

Shamrock Salt & Pepper Set  
4.8cm (W) x 8.3cm (H)







**1325**  
Shamrock Oval Covered Dish  
23.9cm (L) x 20.3cm (W) x 15.2cm (H) x  
1390mlC each

**1316**  
Shamrock Mixing Bowl  
24.1cm (D) x 10.9cm (H)



**1326**  
Shamrock Large Oval Platter  
38.1cm (L) x 30.5cm (W) x 3cm(H)

**0174**  
Shamrock Tiered Server ^  
22.6cm (W) x 24.1cm (H)



**1317**  
Shamrock Tray  
32cm (L) x 16cm (W) x 3.8cm (H)

Beautiful and functional Shamrock Kitchenware incorporates Belleek's iconic basketweave and hand painted shamrocks into product designs that enhance the Shamrock Tableware collection and can be used in your kitchen everyday.





**0267**

Harp Shamrock Tea for One  
16.5cm (W) x 13.7cm (H)  
Teapot 355mLC, Cup 177mLC

Belleek Classic: Teaware

## Harp Shamrock

This iconic Belleek tea set was designed in the 1890s by Frederick Slater to portray the essence of Ireland. He chose three elements. Shells to illustrate the island of Ireland, Harps to portray its people and culture and Shamrocks representing its patron, Saint Patrick.

All teaware is dishwasher and microwave safe.



**0255**

Harp Shamrock Teapot  
10.2cm (W) x 11.4cm (H) x 710mLC



**2429**

Harp Shamrock Sugar & Cream Set  
Sugar 10.1cm (W) x 5.6cm (H) x 142mLC  
Cream 7.6cm (H) x 142mLC

**0242**

Harp Shamrock  
Teacup & Saucer  
Teacup 10.1cm (W) x 6.4cm (H) x 142mLC and Saucer 14cm (D)





Belleek Classic: Teaware

## Sayings Mugs



**45073**

Blessings From Ireland Mug  
7.1cm (L) x 8.4cm (W) x 12.5cm  
(H) x 355mlC



**45074**

Céad Mile Fáilte Mug  
7.1cm (L) x 8.4cm (W) x 12.5cm  
(H) x 355mlC



**3209**

'I've Got Irish Roots' Mug  
11cm (W) x 11.5cm (H) x 325mlC



**3207**

Mum Mug  
11cm (W) x 11.5cm (H) x 325mlC



**3190**

Himself Mug  
11cm (W) x 11.5cm (H) x 325mlC



**3191**

Herself Mug  
11cm (W) x 11.5cm (H) x 325mlC



**3192**

Himself and Herself  
Mug Set  
11cm (W) x 11.5cm (H) x 325mlC





CANCER  
RESEARCH  
UK



Belleek Classic

## Mug of Hope

This mug was designed by Belleek Collector and cancer survivor Johannah Purdon to help funding to find a medical cure for a disease that leaves no family untouched. For every mug sold £1 or \$1 will be donated to Cancer Research UK or the American Cancer Society. In Johannah's words...

"I am a survivor!"

Three words no one ever wants to hear "You have cancer!" Me?? - I have cancer? How is that possible??! Your life is forever changed after that. The journey begins with educating yourself on the disease and what treatment is available.

Doctors, surgeons, oncologists, radiologists and medical insurance. It seems never ending! Cancer affects everyone around you, co-workers, friends and family. Without their support and help it's hard to get through it. I am blessed my husband was with me all the way. I survived! but I have many co-workers, friends and family who didn't.

I have been doing volunteer work since I was a teenager and as I've gotten older and seen all the devastation and heartbreak caused by this dreadful disease, I have volunteered steadily for many cancer charities. We need to find a cure!

One of the bright spots in my life has been my love of Belleek and the Collectors Society. It has brought me much joy on dark days as have all my Belleek family! Cancer has taught me to treasure each moment and live life fully. My motto in life has always been:

"Live, Laugh, Love, Sing, Dance."

Share a hug and tell someone you love them today!  
I do so more fiercely today!  
I am Johannah  
I am a SURVIVOR!  
I am HOPE!

Lets fill these Mugs of Hope and help find a cure!

**NEW**

**4397**

Mug of Hope

11.9cm (L) x 8.6cm (W)

x 12.7cm (H) x 340mlC

**Designed by Belleek  
Collector and cancer survivor  
Johannah Purdon, £1/\$1 from every mug  
sold will be donated to cancer charities.**

## Votives



**1647**

The "Quiet Man" Cottage Votive  
14cm (W) x 8.9cm (H)

### The "Quiet man" Cottage Votive

The cottage used as the house belonging to the "Quiet man" was located in Cong, Co Mayo situated in the west of Ireland. The cottage, then lived in by the Joyce family, was used as part of the set in the 1952 film called the Quiet man starring John Wayne and Maureen O'Hara as well as then veteran actor Barry Fitzgerald. John Ford who made it as homage to his own Irish background directed the film. He was born Sean Aloysius Feeney/O'Ferna in 1895 in Maine, the youngest of thirteen children born to Irish immigrants. The film received a total of seven Academy Awards nominations (including Best Picture, Best Supporting Actor - Victor McLaglen, Best Screenplay - Frank Nugent, Best Art Direction, and Best Sound) and won two Oscars: Best Cinematography - Winton Hoch and Archie Stout, and Ford (at 57 years of age) won his fourth and final Best Director Oscar, establishing a record that is still unbeaten. The Quiet man cottage since then has become a memorable and popular tourist attraction in the village of Cong.

The "Quiet Man" cottage votive is a lovely gift to give and a much-appreciated addition to any Belleek collection.

## Catalina Votive

This colourfully decorated Votive has been inspired from local Irish wild flowers and woodlands found in nearby Castle Archdale Forest Park in County Fermanagh. During the second World War Castle Archdale was an RAF base for seaplanes called the 'Catalina'.

This ancient limestone landscape on the shores of Lough Erne supports a unique mix of wildlife and biodiversity. The hand painted decoration includes pink wild roses, forget-me-nots, thistles and daffodils.

A beautiful hand applied butterfly is hidden amongst the foliage, also a tiny ladybird and bumblebee.



**4546**

Catalina Votive  
(includes LED  
tealight)  
9cm (W) x 13.5cm (H)







**NEW**

**4618**

Kitchen Garden Annual Basket 2020  
 27.9cm (L) x 21cm (W) x 3.8cm (H)

Belleek Classic: Giftware

## Annual Basket 2020

The inspiration for this piece is taken from the walled Victorian Kitchen Garden found at Lissadell House, County Sligo, Ireland. Looking over Drumcliff Bay, Lissadell lies on the south shore off the Magherow Peninsula taking its name from the Irish placename, Lios an Doill

Ui Dalaigh. The large Neo-classical Greek style house with Victorian walled garden boasts its own micro climate making it suitable to grow a variety of fruit, vegetables and herbs. Built in the 1830s, the house and gardens are open in the summer months to visitors. This new

oval shaped basket is woven in the shape of a platter of colourful salad vegetables. Scattered around the edge are peapods, cabbages, corn, asparagus and cherry tomatoes. Hidden throughout are ladybirds, a butterfly and a bumblebee.



Belleek Classic: Giftware

## Baskets

The creation of each Belleek basket tells us a story about the amazing art of Belleek basket making. Basket and flower making was introduced to Belleek by William Henshall who came to work for Belleek Pottery in the late 1860s. Over the next forty years he developed the craft and trained the local craftsmen in the necessary skills. These in turn passed their skills down through the following generations to the present day. Each basket comes gift boxed and with a Certificate of Authenticity.



**NEW**

**4615**

Violet Basket

18.5cm (W) x 5.8cm (H)



**4456**

Rose Gebera Basket

16cm (D) x 5.8cm (H)

**NEW**

**4617**

Holly Basket

22.9cm (L) x 9.7cm (W)  
x 3.8cm (H)



**4600**

Catalina Round Basket

15.9cm (D) x 5.7cm (H)









Belleek Classic: Giftware

## Four Seasons Baskets



This collection of hand woven baskets is a celebration of the intricate cycle of life as it continuously flows through our unique seasons. Each basket represents each season, Spring, Summer, Autumn, and Winter. Each is lovingly adorned with handcrafted flowers which are synonymous with that particular season. The Four Seasons Baskets are a reminder of the passage of time and of life's cyclical nature; echoing the natural transitions of our planet and of life in general.

Spring: Crocus, bluebell, pansy, lily of the valley, gerbera

Summer: Buttercup, aster, daisy, dragonfly, bee

Autumn: Marigold, autumnal leaves, apples, bee

Winter: Holly, roses, buds



**4605**

Spring Flower Basket

17.8cm (L) x 14cm (W) x 5.1cm (H)



**4607**

Autumn Flower Basket

17.8cm (L) x 14cm (W) x 5.1cm (H)



**4606**

Summer Flower Basket

17.8cm (L) x 14cm (W) x 5.1cm (H)



**4608**

Winter Flower Basket

17.8cm (L) x 14cm (W) x 5.1cm (H)





**NEW**

**4245**

Claddagh Wall Plaque  
15.5cm (D) x 1.8cm (H)

Belleek Classic: Giftware

## Claddagh & Wild Rose

The Claddagh giftware range highlights the Claddagh ring the symbol of love, friendship and loyalty. A beautiful range suitable as an Anniversary, Engagement or Wedding gift.



**2050**

Claddagh Makeup Bell  
6.1cm (W) x 9.4cm (H)



**2418**

Claddagh 5 x 7 Frame  
20.3cm (W) x 27.9cm (H)



**4660**

Irish Wild Rose 10" Vase  
14cm (D) x 25.4cm (H)

The 10" Irish Wild Rose vase has been inspired from local hedgerows found around the Fermanagh Lakelands where Irish roses grow wild during the summer months with rose hips later budding in the Autumn. The flowers are beautifully hand painted with mother of pearl and grey tones to highlight the butterfly and bumble bee. This larger piece with wide neck, allows for a large bouquet of flowers to be displayed.

Belleek Classic: Giftware

## Irish Flax

Flax is the plant which linen is made from and for many years growing Flax was a major farming occupation and industry in Ireland. This Irish Flax Collection, accented in gold, is hand decorated with pastel shaded flax flowers which can be still seen in the countryside growing wild in the hedgerows.



**NEW**

**4482**

Irish Flax Pitcher  
10.2cm (L) x 8.9cm (W) x 15.2cm (H)



**4487**

Irish Flax Mini Vase  
5.6cm (D) x 10.2cm (H)



**4480**

Irish Flax Vase  
8.9cm (W) x 17.8cm (H)



**4485**

Irish Flax Lamp and Shade  
UK Fittings 39.6cm (W) x 48.3cm (H)



**4484**

Irish Flax 9.5" Vase  
15.2cm (W) x 24.1cm (H)



**4483**

Irish Flax Gift Box  
11.9cm (D) x 10.2cm (H)

**4486** US Fittings







**1935**  
Daisy Lamp and Shade  
(UK Fittings)  
76.2cm (H) Supplied with shade shown in image.  
**1937** (US Fittings)

Belleek Classic: Giftware

## Daisy

Resident Belleek Designer Frederick Slater designed the Daisy Vase in the 1890s. One day as he looked out the window of the Pottery, which overlooks the River Erne, he saw a little girl picking daisies. He sketched her and he noted the way she clutched the Daisies, the shape of which became the design of the vase. Many years later the popularity of this vase led Belleek to expand the range, making up the present Daisy Collection.



**1936**  
Daisy Trinket Box  
8.6cm (W) x 8.4cm (H)



**1934**  
Daisy Toy Spill Vase  
6.1cm (W) x 11.3cm (H)



**1932**  
Daisy Vase Tall  
10.2cm (W) x 26.7cm (H)



**0517**  
Daisy Spill Vase  
8.1cm (W) x 15.6cm (H)



# Lighting



**4478**

Castle LED Light

Battery operated. 9.7cm (D) x 19.6cm (H)



**4581**

Castle Luminaire  
(UK Fittings)

Electric Fitting.  
16cm (D) x 25.4cm (H)

**4582**

(US Fittings)



**4476**

Blarney Cottage LED Light

Battery operated. 14cm (L) x 9.1cm (W) x 9.7cm (H)

**NEW**

**4585**

Shamrock Luminaire (UK Fittings)

Electric Fitting 16.5cm (D) x 31.2cm (H)

**4586** (US Fittings)



**4355**

Shamrock Lace Lamp and Shade (UK Fittings)

Supplied with shade shown in image  
39.6cm (W) x 50.2cm (H)

**4356** (US Fittings)

**NEW**



FRONT

**4587**

Thatched Cottage Luminaire (UK Fittings)

Electric Fitting

25.4cm (L) x 13.5cm (W) x 16.5cm (H)

**4588** (US Fittings)



BACK



# Shamrock Vases



**1781**  
Shamrock Mini  
Vases (set of 4)  
4.1cm (W) x 10.2cm (H) each



**NEW**

**4671**  
Weave 4" Vase  
5.6cm (D) x 10.2cm (H)



**NEW**

**4672**  
Shamrock 4" Vase  
5.6cm (D) x 10.2cm (H)



**NEW**

**4674**  
Durrow 4" Vase  
5cm (D) x 10.2cm (H)



**NEW**

**4673**  
Meadow 4" Vase  
5.8cm (D) x 10.2cm (H)



**2675**  
Kylemore 7" Vase  
8.9cm (W) x 17.8cm (H)



**0517**  
Daisy Spill Vase  
8.1cm (W) x 15.6cm (H)



**2082**  
Woodland Vase  
11.7cm (W) x 25.4cm (H)



**1932**  
Daisy Vase Tall  
10.2cm (W) x 26.7cm (H)



**1934**  
Daisy Toy Spill Vase  
6.1cm (W) x 11.3cm (H)



**2223**  
Castle 7.7" Vase  
9.9cm (W) x 19.6cm (H)





**3421**  
Welcome Door  
Wall Plaque  
9.4cm (L) x 1.5cm (W)  
x 17cm (H)

Belleek Classic: Giftware

## Shamrock Giftware

The Shamrock Giftware collection includes a wide range of giftware pieces all featuring the hand painted shamrocks which have become synonymous with Belleek. These are gifts that will be treasured for years to come.



**2130**  
Shamrock Sweet Dish  
11.9cm (W) x 2cm (H)



**2083**  
Shamrock Mint Tray  
24.1cm (L) x 7.6cm (W) x 1.9cm (H)



**0514**  
Harp  
7cm (W) x 16.3cm (H)



**4354**  
Shamrock Lace  
Pierced Votive  
(Tealight included)  
10.7cm (W) x 8.6cm (H)



**1940**  
Shamrock Baby Cup  
9cm (W) x 6.6cm (H)

**2200**  
Quizzical Cat  
8.6cm (W) x 11.4cm (H)



**2292**  
House Blessing Wreath  
15.9cm (D)



**3425**  
St. Brigid's Cross  
19.1cm (W) x 19.1cm (H)

Belleek Classic: Giftware

## Baby Gifts



**0966**

Girl Name Mug  
8.9cm (W) x 6.4cm (H)  
(Suitable for inscription)



**0965**

Boy Name Mug  
8.9cm (W) x 6.4cm (H)  
(Suitable for inscription)

## Frames



**2418**

Claddagh 5" x 7" Frame  
20.3cm (W) x 27.9cm (H)



**2994**

Tara 4" x 6" Frame  
17cm (W) x 22.2cm (H)



**0529**

Shamrock 5" x 7" Frame  
19.8cm (W) x 24.8cm (H)



**2998**

Tara 8" x 10" Frame  
27cm (W) x 32cm (H)



**4195**

Irish Eyes are Smiling 3" x 3" Frame  
12cm (W) x 12cm (H)





Belleek Classic: Giftware

## Trinket Boxes



**2220**

Kylemore Trinket Box  
8.6cm (W) x 11.4cm (H)



**1936**

Daisy Trinket Box  
8.6cm (W) x 6.4cm (H)



**4483**

Irish Flax Gift Box  
11.9cm (D) x 10.2cm (H)



**2125**

Shamrock Ring Holder  
11.2cm (W) x 5.1cm (H)



**3390**

Irish Blessing Gift Box  
7.6cm (D) x 3.3cm (H)

**NEW**

**4670**

Love Knot Gift Box  
9.7cm (L) x 9.7cm (W) x 4.6cm (H)

Belleek Classic: Giftware

# Celebration Plates



**4594**

Personalised Anniversary Plate  
22.9cm (D) x 2.5cm (H)

Text on plates left and right reads "May your mornings bring joy, and your evenings bring peace, May your troubles grow few, as your blessings increase."  
See page 73 for personalisation information.



**3380**

Marriage Blessing Plate  
22.6cm (D)



**2574**

Harp Irish Blessing Plate  
22.6cm (D)



**3381**

Mothers Blessing Plate  
22.6cm(D)



**4593**

Happy Anniversary Plate  
22.9cm (D) x 2.5cm (H)





**4249**  
Angel of  
Protection  
5.5cm (L) x 5.3cm (W)  
x 8.4cm (H)

Belleek Classic: Giftware

## Christian Gifts



**2801**  
Celtic Wall Cross  
8.2cm (W) x 19cm (H)



**2080**  
Celtic High Cross  
8cm (W) x 18.5cm (H)



**3425**  
St Brigid's Cross  
19cm (W) x 19cm (H)

**0480**  
Blessed Virgin Mary  
11cm (W) x 31cm (H)



**4140**  
Lady of Knock Statue  
28cm (H)



**0497**  
Celtic Cross Font  
8.1cm (W) x 19cm (H)

# Personalised / Corporate Inscriptions and Monogramming



Belleek offer a wide range of items that can be personalised by hand painted inscriptions. This makes each item a very special and thoughtful gift for any occasion.

We have highlighted a few suitable items with sample inscriptions below. If there are any other items apart from those shown that you would like to get inscribed please check with one of our sales representatives to see if it is possible.

The personalisation is carried out in the pottery itself. We have a team of inscribers who inscribe each piece in a choice of four colours (eg. Green, Blue, Pink and Black) or in liquid gold. It takes around 1 - 2 weeks for personalised items to be completed.

Trophies can be customised to include company logos and inscriptions up to 12 characters per item.



**4507**  
Lucky Shamrocks  
Personalised Mug



**3621**  
Personalised Bauble



**3204**  
Personalised Mug



**4196**  
3"x 3" Personalised Frame



Examples of Corporate Logos/Monogramming.





Thirty Third Edition



**NEW**

**4668**

Annalong Cornmill Annual Ornament 2020

8.4cm (L) x 4.6cm (W) x 5cm (H)

Belleek Classic: Christmas

# Annual Christmas Ornament

## Annalong Cornmill Annual Ornament 2020

This year's Annual Christmas Ornament has been inspired by an Irish Cornmill in Annalong, County Down, Northern Ireland.

In operation since the early 1800s, the busy Cornmill milled oats supplied by local farmers into oatmeal. Closed by the 1960s, the beautifully restored mill now houses an exhibition showing the milling process in detail. The waterwheel which powered the mill proudly stands at the side and can still be seen working.

Hand painted on both sides, the intricate work of the painters highlight the mill doors, sacks of corn, magnificent waterwheel and lucky shamrock.

Hand crafted at historical Belleek Pottery, the Annalong Cornmill is the 33rd Annual Edition Ornament and will only be available in 2020.



Belleek Classic: Christmas

## Classic Christmas



**NEW**

**4679**

Christmas Buddies  
Ornament

5.8cm (L) x 5cm (W) x 0.3cm (H)



**NEW**

**4675**

Paddy Snowman Bell Ornament  
4.3cm (D) x 8.6cm (H)



**NEW**

**4677**

Jar Ornament  
4.6cm (D) x 7.9cm (H)



**NEW**

**4676**

Nutcracker  
Ornament  
4.1cm (D) x 9.4cm (H)





**3621**  
Personalised Bauble  
7.1cm (W) x 7.9cm (H)

Belleek Classic: Christmas

## Classic Christmas



**4388**  
Christmas Scene  
Ornament  
8.9cm (D) x 0.8cm (H)



**4423**  
Baby's First  
Christmas Ornament  
9.6cm (L) x 5cm (W) x 5.3cm (H)



**4658**  
Rainbow Ornament  
20cm (L) x 8.4cm (W)  
x 6.4cm (H)



**4425**  
Nell's Cottage Ornament  
5.3cm (L) x 4.4cm (W) x 5.3cm (H)



**4653**  
Our First Christmas  
Ornament  
7.6cm (W) x 8.9cm (H)



**4656**  
Pot of Gold Ornament  
7cm (L) x 4.5cm (H)



**2906**  
Irish Blessing  
Ornament  
8.4cm (D)



**2880**  
House Blessing Ornament  
5.6cm (W) x 10.2cm (H)



**3517**  
St. Kieran's Celtic  
Cross Ornament  
8.9cm (W) x 12.7cm (H)

**4655**  
Celtic Knot Ornament  
5.6cm (W) x 6.4cm (H)



**1994**  
St. Brigid's Cross Ornament  
10.2cm (W) x 10.2cm (H)



**1810**  
Shamrock Shaped Ornament  
5.8cm (W) x 6.4cm (H)



**4654**  
Snowman Bell Ornament  
6.4cm (W) x 7.6cm (H)